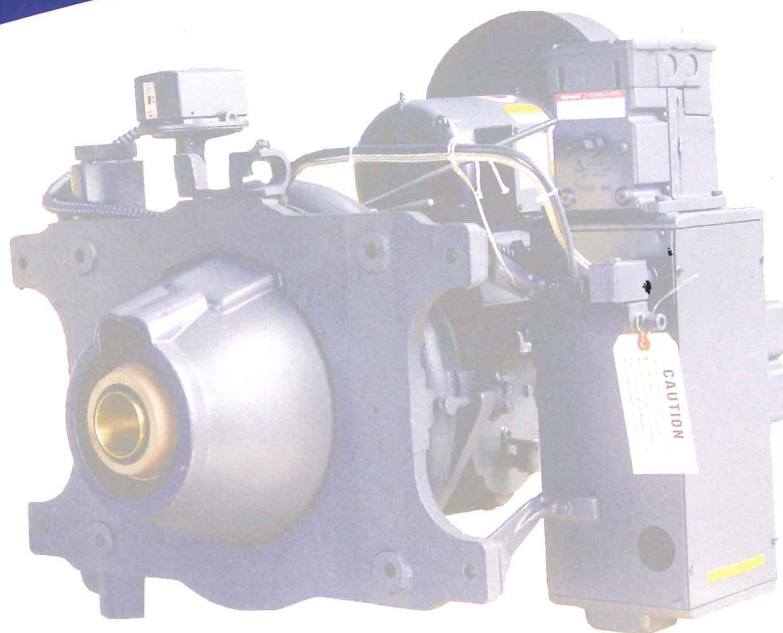


# GOT INJECT-AIRE?



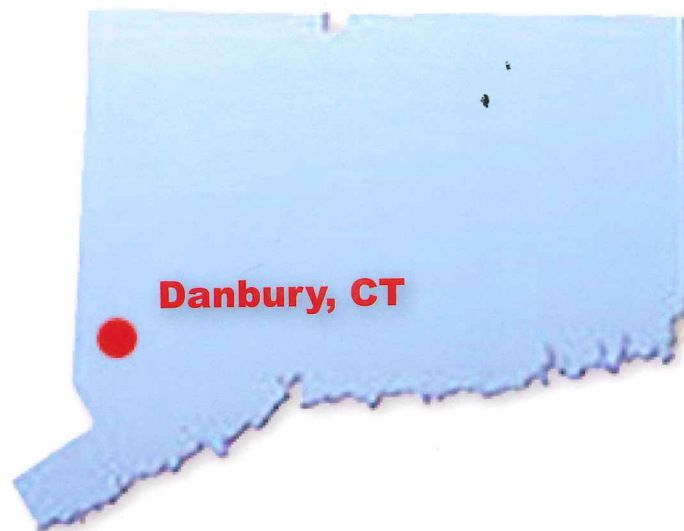
...then we have your **PREFERRED**  
*total replacement*  
*solution.*







**Preferred Utilities Manufacturing Corporation (PUMC)** is pleased to offer a direct replacement for your "Inject-Aire" burner, piping trains, controls, and ancillary equipment. PUMC is based in Danbury, CT, which is located about 60 miles north of New York City. Our engineering and manufacturing facility is also located in Danbury, CT which proudly designs and manufactures all of the required equipment for your replacement project.



## The **PREFERRED** standard since **1920.**

Founded in 1920, Preferred has built a legacy by delivering innovative combustion solutions. Building on that legacy, Preferred continues to engineer new and exciting products tailored to meet the unique challenges and demands of today's combustion industry.

We specifically engineer our products to provide energy savings, emissions reduction, and rugged durability. Using these industry-leading products, it is our aim to present our solution for upgrading your burner, controls, and boiler room equipment.





# Customized solutions. Rugged endurance.

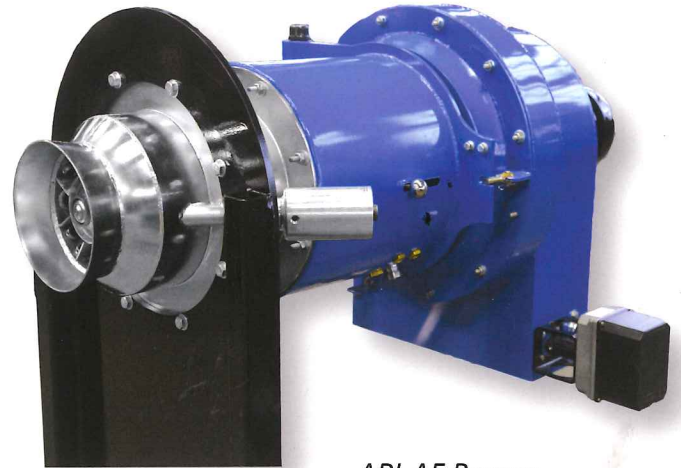
## Our Burner Solution:

Building on the combustion knowledge and experience gained through the years providing thousands of burners to customers worldwide, PUMC has developed the next generation of "Inject-Aire" burners.

With our burner solution, PUMC leads the industry in burner technology with high turn-down, low excess air, and reduced emissions. Preferred's unique burner solution offers low emissions capabilities without sacrificing efficiency, operational stability, or turndown.



*BurnerMate Universal*



*API-AF Burner*

## Our Controls Solution:

PUMC has a range of proprietary controls solutions including burner management, combustion control, feedwater control, drum level control, draft control, and boiler master control.

Our proposed burner replacement control system utilizes parallel positioning combustion control, redundant scanning, atomizer post-purge, O2 trim, and more.

## Our Support Solution:

With our manufacturing and engineering based in Danbury, CT, Preferred is able to better support our equipment in the Northeast where many of our "Inject-Aire" burner customers are located. Preferred offers a single source boiler room solution that eliminates the finger-pointing situation common with other burner manufacturers who integrate with someone else's controls.

Our service personnel are highly trained and many are already familiar with your specific boiler room and equipment. Renowned for its level and quality of service and support, PUMC stands by its products.





## PREFERRED UTILITIES MFG CORP.

### ***Advanced Performance Inject-Aire Low-NOx Axial Flow Burner***

The Advanced Performance Inject-Aire Low NOx burner (API) produces an exceptionally stable flame at all firing rates.

#### ***Fuel Variety***

Capable of firing natural gas, light oil, heavy oil, digester gas, ethanol, and more, the API offers a wide range of fuel burning capability.

#### ***Advanced Design***

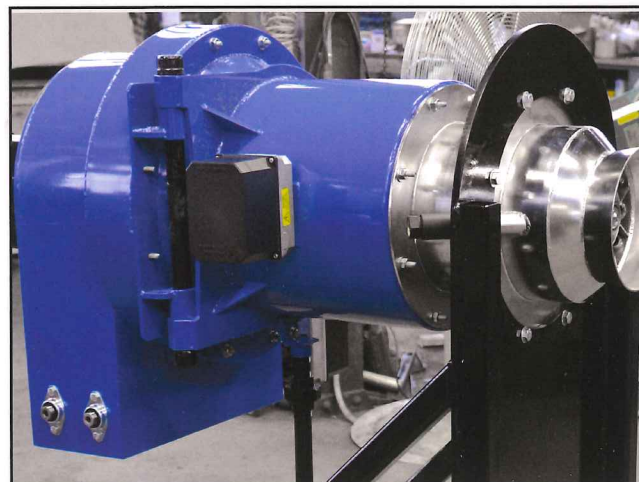
Our engineers specifically designed this burner to eliminate field errors, reduce space requirements, and facilitate maintenance when needed.

#### ***High Efficiency***

The API burner incorporates VFD for control of FD fan speed, resulting in significant electrical reductions, regardless of the type of fuel burned.

#### ***Low Emissions***

1.5 -2.5% excess oxygen from 50 - 100% firing rate  
30 ppmc on natural gas  
90ppmc on #2 fuel oil  
250 ppmc on #6 fuel oil without FGR

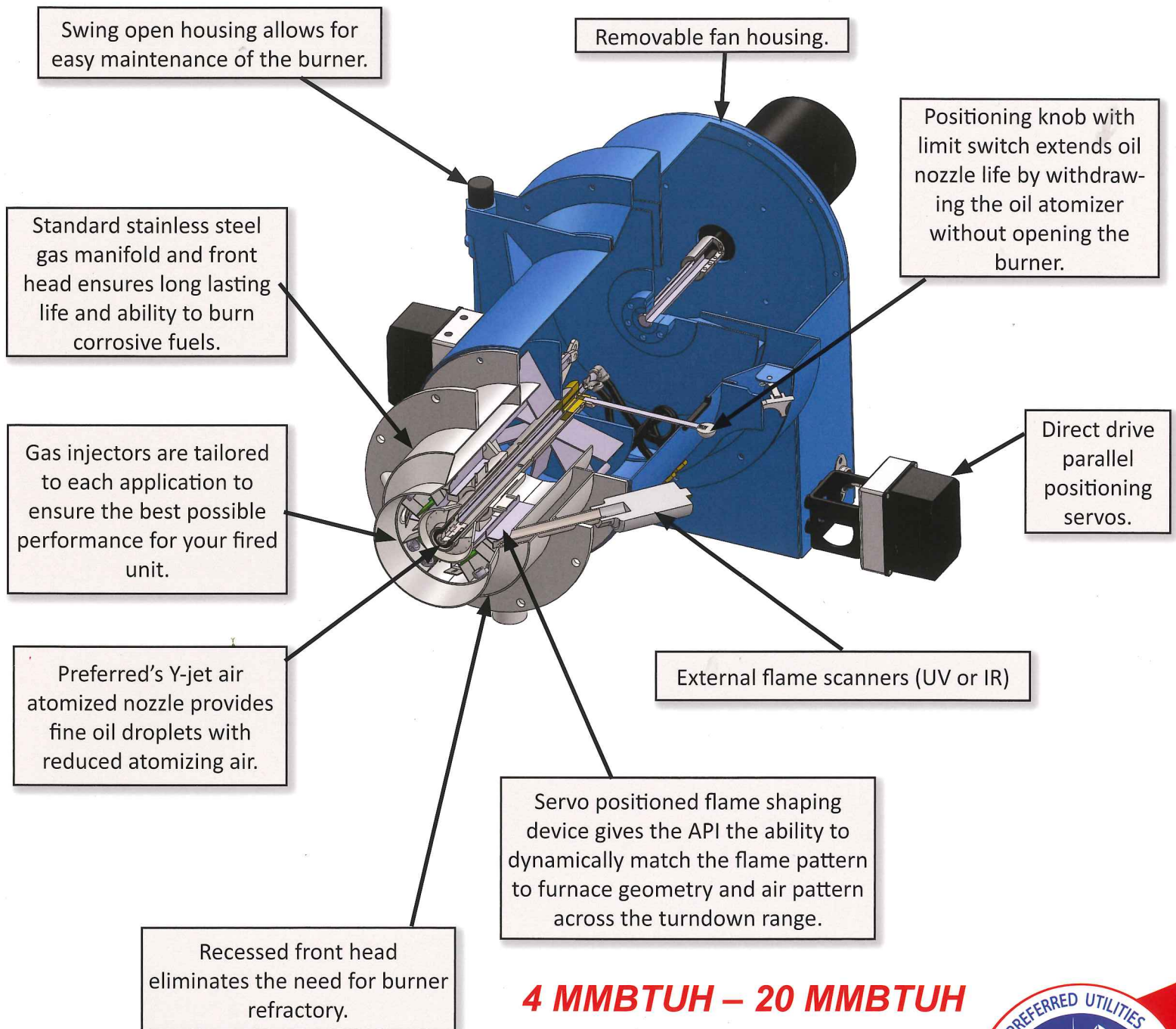






# ADVANCED PERFORMANCE INJECT-AIRE LOW-NO<sub>x</sub> AXIAL FLOW BURNER

*Low emissions or high efficiency—why should  
you have to choose?*



**4 MMBTUH – 20 MMBTUH**





# PREFERRED INSTRUMENTS



## *BurnerMate Universal*

The BurnerMate Universal offers complete boiler control in an economical, off-the-shelf, pre-programmed controller. Separate processors are used for flame safeguard and combustion control for NFPA 85 compliance. Configuration is done in the field using the LCD key pad, the optional touch screen, or our exclusive BMU\_Edit software running on your PC. BMU functions include:

- Advanced flame safeguard control including first out annunciation, nuisance trip protection, and lockout snapshot
- Combustion control (jackshaft, parallel positioning, with optional oxygen trim) utilizing up to ten servos and up to four Variable Speed Drives (VSDs)
- Draft control
- Feedwater control: single, two-element, or three-element.
- Large 10" color touch screen with pre-programmed graphic pages



The BurnerMate Universal is available for immediate delivery, requires no programming, and is U.L./FM approved.