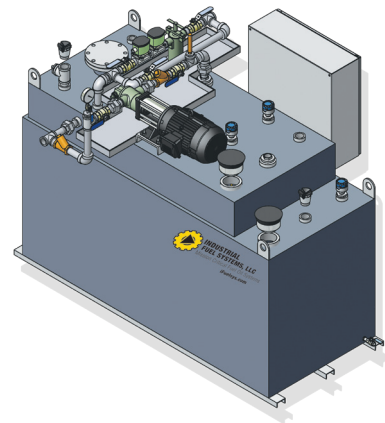
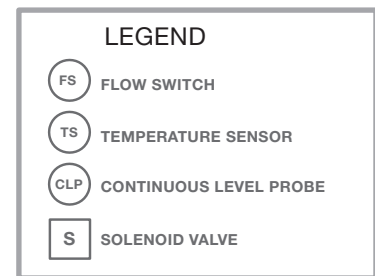
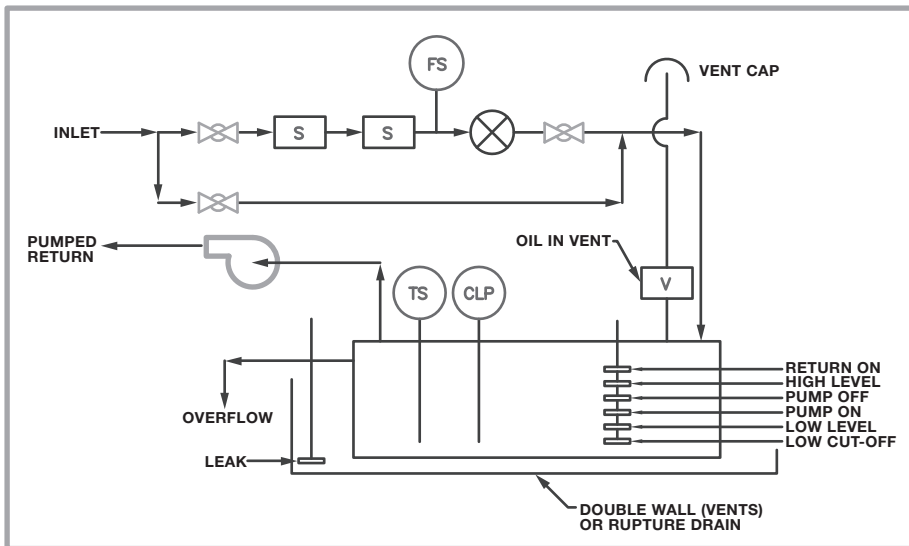




## Fuel Oil Day Tanks

Day tanks are designed to reliably provide fuel oil storage for emergency generators or boilers. The day tanks are a complete package with all the required instrumentation and pumping equipment mounted to the day tank. Control panels can be mounted to the day tank or mounted close by (wall mounted), these control panels are UL508 designed.

Day tanks are available in either double wall (closed top) or open top (rupture basin). Double wall will typically have 110% containment while the rupture basin will have 160% containment. They are available in any size and shape. These tanks can be custom designed to meet any size restriction (door openings or height restrictions). All tanks are UL142 and are typically fabricated of 10 gauge steel. Below is our list of standard sizes.



### Standard Models (Custom Sizes and Configurations Available)

Model	Capacity (Gallons)	Width A (inches)	Length B (inches)	Height C (inches)
DTnn- 0100	100	32	30	50
DTnn- 0150	150	36	36	50
DTnn- 0200	200	36	46	50
DTnn- 0300	360	38	66	56
DTnn- 0500	550	40	96	56
DTnn- 0800	800	50	110	60
DTnn- 1200	1200	60	120	66

\*nn indicates product version "DW" for Double Wall and "RB" for rupture basin

