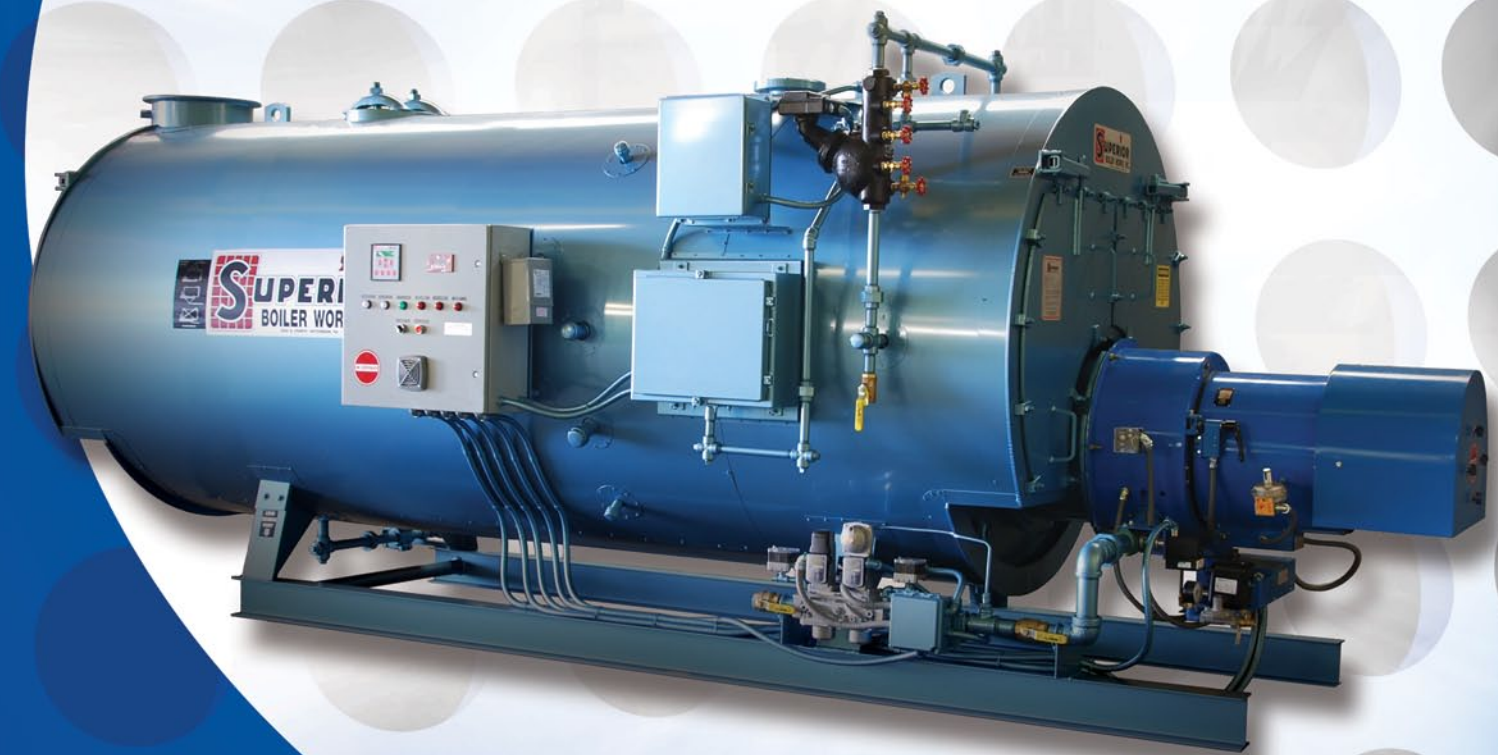




SUPERIOR

BOILER WORKS, INC.

Quality • Safety • Exceptional Value



- 3-pass scotch marine design with full wetback construction
- Pressures from 15-300 psi steam and 30-160 psi hot water
- Available with NOx reduction technology to sub 9 ppm
- Sizes from 70-2,500 BoHP

SUPER SEMINOLE

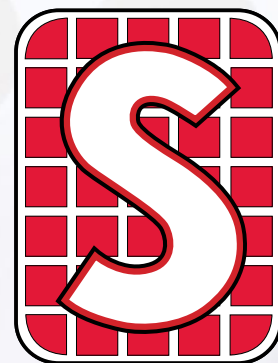
Choice

Since 1930 we have continued to improve our offering of quality, safety, and exceptional value to our respected customers in industry, commerce and healthcare. We have a dedicated customer service team to support our products and offer a full line of after-market and OEM parts. With Superior Boiler Works, you can choose your steam or hot water packaged boiler solution to fit your demanding needs. We also offer a full line of parts to assist in making SBW your solution.

We invite you to Demand Superior Performance and Demand Superior Boilers.

Nominal BoHP	70	80	100	125	150	200	250	300	350	400	500	600	700	750	800	900	1000
Unit Model Number	350	400	500	625	750	1000	1250	1500	1750	2000	2500	3000	3500	3750	4000	4500	5000
Output (MBH)	2343	2678	3348	4184	5021	6695	8369	10043	11716	13390	16378	20085	23433	25106	26780	30128	33475
Steam (LBS/HR)	2415	2760	3450	4312.5	5175	6900	8625	10350	12075	13800	17250	20700	24150	25875	27600	31050	34500
Input Gas (1,000 BTU/FT ³)	2929	3348	4184	5230	6276	8369	10461	12553	14645	16738	20922	25106	29291	31383	33475	37659	41844
Input #2 Oil (140,000 BTU/GAL)	20.91	23.91	29.88	37.35	44.83	59.77	74.72	89.66	104.60	119.55	149.44	179.33	209.21	224.16	239.10	269.00	298.88
Heating Surface (FT ²)	364	412	510	643	765	1022	1282	1525	1765	2019	2517	3017	3548	3783	4040	4541	5040
Furnace Volume (FT ³)	18.93	22.51	29.66	34.26	42.39	52.18	68.81	84.37	95.32	115.17	148.7	171.45	183.76	192.05	206.57	236.99	259.82
Design Pressure*	250	250	250	250	250	250	250	250	250	250	250	250	250	250	250	250	250
Length Overall (IN.)	158	171	197	183	205	210	241	270	278	263	305	301	297	305	319	324	343
Width Overall (IN.)	73	73	73	80	80	90	90	90	99	110	110	116	124	124	124	132	132
Height Overall (IN.)	85	85	85	92	92	102	102	102	108	119	119	125	133	133	133	141	141
Shipping Weight 15 psi**	8400	9100	10400	11500	12900	17500	20300	23000	25800	29200	35300	39200	43100	44900	47200	51700	55800
Shipping Weight 150 psi**	9300	10000	11300	12800	14200	19400	22300	24900	28700	33200	38500	42800	46600	48300	50700	60400	65200

*Higher Pressures are available upon request **Shipping Weights are approximate • Dimensions are subject to change without notice. • Certified Drawings are available.



"Demand Superior Performance"

3524 E. 4th Street • Hutchinson, KS 67501 • P.O. Box 1527 • Hutchinson, KS 67504-1527

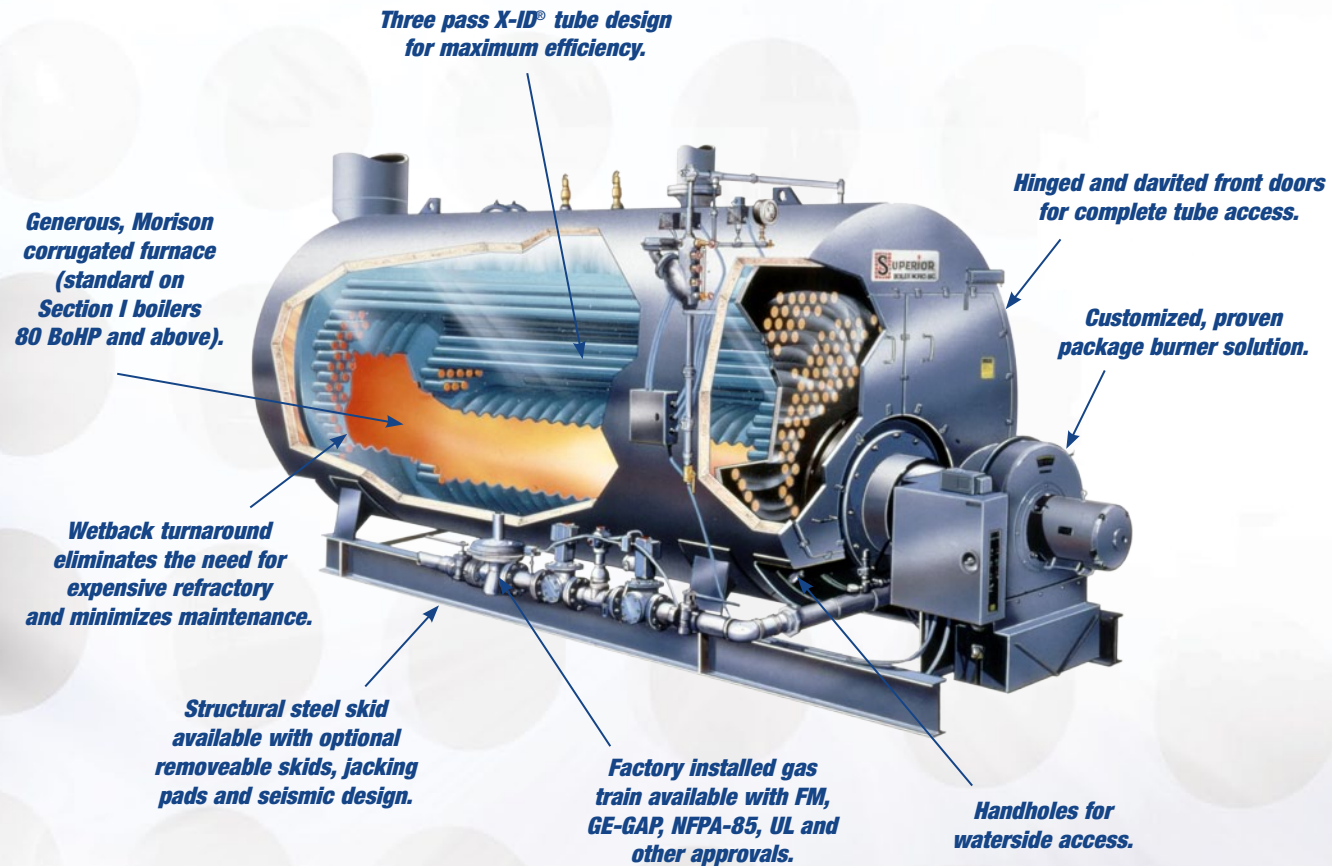
620-662-6693 • Fax: 620-662-7586

www.superiorboiler.com

The Superior Boiler Works' Super Seminole 3-pass wetback boiler is designed for maximum efficiency, reliability and durability for today's most demanding environments.

Features

- 3 pass wetback design with X-ID® tubes
- Exceptional efficiencies and economical operation
- Corrugated furnaces on ASME Section I high pressure boilers
- Large furnace and rear turnaround volume for complete combustion
- Extended warranty on major PV parts and front/rear smoke box doors
- Packaged with Gas, Oil, or Combination Gas & Oil Burner



Quality

To make the highest quality scotch marine boiler on the market, we began with quality-in-design. The tube sheet, tube and furnace and other critical parts were designed above the minimum code to guarantee a quality design that will last for decades.



The tubesheet is the most critical component in any scotch marine type boiler and Superior's tubesheets exceed the ASME code thickness by 25% in low pressure units and 33% in high pressure units. Thick tube sheets coupled with tubes 10% thicker than ASME code requirements and 3/4" ligament spacing give Superior Boiler Owners more tube seating surface and long equipment life.



For long, trouble free boiler life, it is also vital that combustion be completed within the confines of the firetube. The Super Seminole is designed with a long furnace made with thicker material than ASME requirements. In addition, the furnaces of high pressure steam Super Seminole boilers are corrugated to thwart negative effects of expansion and contraction.

Our employees unite each and every day to seek quality in workmanship. Whether we are cutting steel, welding tubesheets to pressure vessels, insulating pressure vessels with two inch 8-lb density mineral fiber, painting galvanized 22 gauge steel jackets with 500°F enamel or piping a gas train, we tailor our products to exceed ASME standards.



Safety



Packaged boilers are trimmed with necessary safeties and code piping and inspected by authorized, independent code inspectors. Factory mounted and wired packaged burners with mounted gas trains complete with main gas pressure regulators are available from all burner manufacturers. Standard burners comply with UL requirements. Code requirements such as CSD-1, IRI, FM, NFPA 85, and CSA are available upon request. Packaged Super Seminole boilers can be factory firetested to check electrical components for proper operation and ensure smooth ignition and quicker field startups.

Exceptional Value

Superior Boilers offer thicker tubesheets, thicker tubes, large corrugated furnaces, and the ability to factory mount, wire and test UL or CSA listed burners from all burner manufacturers. However there are still more features that make the Super Seminole an exceptional value. All Super Seminole boilers have two 3" x 4" handhole openings in the front tube sheet, two handholes on the bottom centerline and an available manway which permits inspection of the bottom of the drum, and facilitates cleaning and tube removal. Full front end and fireside access is standard on all Superior boilers. Our design eliminates the necessity of disconnecting fuel lines when inspection or maintenance functions are required.